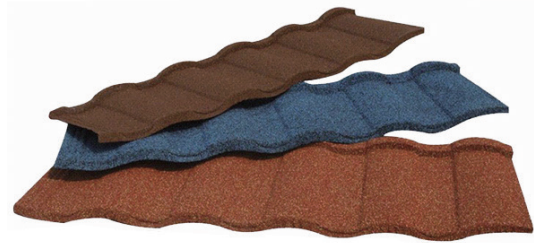


TEFUTE®

Stone Coated Steel Roofing Tile



PRODUCT INFORMATION



Profile: Roman

Pallet Layout: Right-to-Left

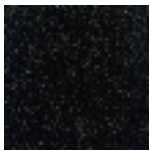
Installation Type: Batten

Batten Spacing: 14 - 7/8" (378 mm)

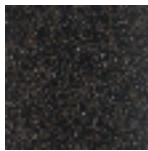
Available Region: United States

Fastening: Exposed

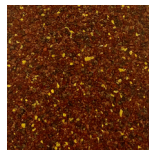
COLOR VARIANTS



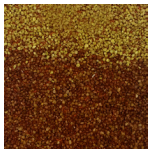
Black



Chestnut



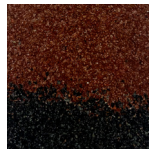
Terra Cotta



Mission Gold



Green



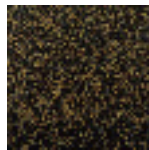
Black and Red



Cedar



Blue



Timberwood

PRODUCT SPECIFICATION

Size: 16-3/8" x 51-1/2"
(416mm x 1,308mm)

Coverage: 14-1/4" x 48-1/4"
(362mm x 1,226mm)

Coverage Area Sq. Ft: 4.99

Tiles per 100 Sq. Ft: 20

Tiles per Pallet: 400 Tiles

Squares per Pallet: 20

Pallets per Containers: 16
Size 20 ft (6.1M)

The finish colors in the images may differ from the actual available colors on the tile. Contact your representative to request a tile sample.

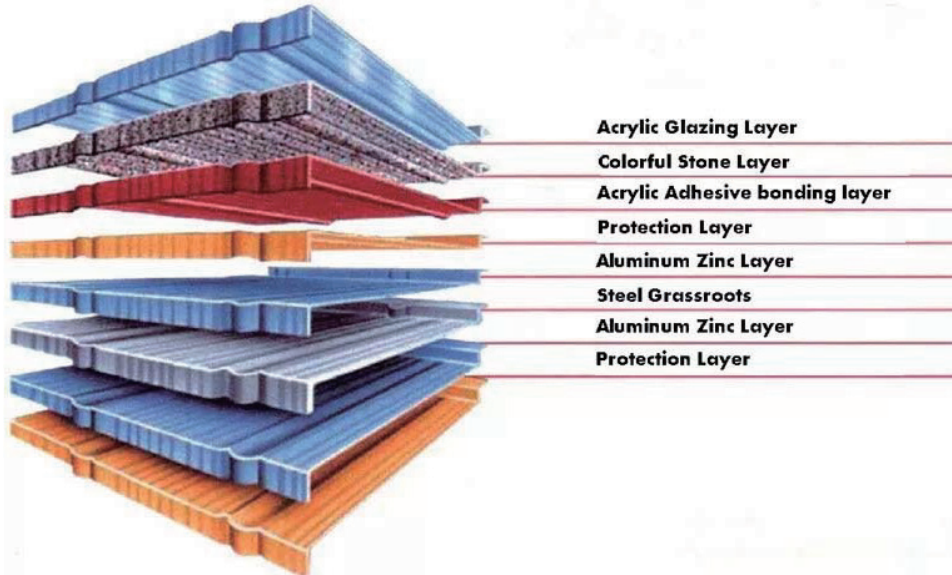
909 - 673 - 1399
10718 N Stemmons Fwy,
Dallas, TX 75200
www.tefuteusa.com

TEFUTE®

Stone Coated Steel Roofing Tile



TEFUTE ® SMART STEEL CHOICE



Lifetime Limited Warranty: 50 years and transferable.



Class-A Fire Rated Materials, strict fire code preventing fire from spreading.



Class 4 Impact Resistance, UL2218, protecting from hail storm.



Engineered to withstand hurricane speed up to 130 MPH.



Durable lightweight materials no affect to collapse during intense earthquake.

The finish colors in the images may differ from the actual available colors on the tile. Contact your representative to request a tile sample.

909 - 673 - 1399
10718 N Stemmons Fwy,
Dallas, TX 75200
www.tefuteusa.com